



# Welcome!

## *Who We Are*

The LaFetra College of Education Collaborative is a strategic hub within the **LaFetra College of Education (LFCE)**, bringing together innovative centers and programs that support educators, leaders, schools, and community partners. As a college-wide engine for innovation and impact, the Collaborative connects expertise and resources to advance meaningful work across education systems.

## *Mission*

At the **Collaborative**, our mission is to empower educators and leaders to co-create the future of education. As LFCE's signature hub for innovation and leadership, The Collaborative advances collaboration, partnerships, and forward-thinking practices that transform teaching and learning.

**This past fall, the Collaborative was energized by a wide range of impactful events, partnerships, and initiatives. We invite you to explore highlights from the semester and learn more about what's ahead!**

## WELCOME TO THE NEW YEAR

Welcome to 2026! As we look ahead to the new year, I am energized by the work before us and grateful for the leadership and innovation that define the LaFetra College of Education.

This moment is especially urgent as organizations across sectors face a significant gap in viable leadership development, leaving the next generation of leaders increasingly ill-equipped to navigate complexity, uncertainty, and rapid change. At the same time, persistent resource constraints and rising expectations to do more with less continue to strain leadership capacity, with the greatest impact felt by those from historically marginalized and underrepresented communities.

In response, LFCE is investing in leadership programming, expanded outreach, and a newly redesigned Organizational Leadership (EdD) program to prepare leaders who can navigate complexity and drive equitable, sustainable change. Designed for working professionals, the program builds on LFCE's commitment to access by offering a flexible, primarily online format that makes advanced learning feasible alongside professional and personal responsibilities. This structure enables participants to integrate learning directly into their work across diverse professional contexts.

As you explore this issue, I invite you to learn more about the Collaborative, the vital role of our advisory boards, and the transformational work they are doing across education systems—along with highlights from our newly redesigned Organizational Leadership (EdD) program, featuring concentrations in Community College Leadership and Leadership and Organizational Transformation, and the exciting updates ahead.

I look forward to the year to come and the collective impact we will make together.



**Dr. Martin Yousef**  
Associate Dean

“We are empowering educators and leaders to co-create the future of education.”

## HOT TOPIC CORNER

*Exploring emerging topics in Education, P-12 School Districts, Healthcare, Law Enforcement, Technology and the Private Sector.*

77% of Organizations report they lack sufficient  
Leadership Depth  
75% of Employers say they cannot find candidates with  
Leadership Capabilities

### How is LFCE Addressing this Challenge?

By **Enhancing Access to our two Doctoral Programs**, LFCE is playing a significant role in training future leaders. Our programs are designed to shape **Value-Centered, Visionary Leaders** who drive change across sectors.

To meet the urgent challenges of today's complex world, from financial pressures to growing equity gaps, we offer **Accelerated Doctoral Programs** to equip working professionals to lead with **Integrity, Drive Innovation**, and **Achieve Lasting Impact** in their organizations and communities.

Our redesigned **Organizational Leadership EdD** equips leaders with **Leadership and Change Management** skills in a variety of sectors including Higher Education, Healthcare, Law Enforcement, Technology, and Private Industry. And now we are introducing a **new concentration** designed specifically for **Community College Leaders**. **This is a 2 year program designed for the working professional.** [Learn More!](#)

Our new **Educational Leadership EdD** allows students to elevate their career in **P-12 Education**. **This innovative two-year program is designed for current Educational Leaders, including Administrators, District leaders, and Teacher Leaders.** [Learn More!](#)

*Redesigned*

## Ed.D. in Organizational Leadership

We're proud to announce our redesigned Ed.D. in Organizational Leadership Program - designed for professionals ready to lead change, inspire transformation, and make a meaningful impact.

**Earn Your Doctorate in just Two Years!**



### **Flexible Format**

- Online learning with some in-person components each term



### **Built-in Dissertation in Practice (DiP)**

- Integrated directly into your coursework



### **Two Concentrations:**

- Community College Leadership
- Leadership & Organizational Transformation

**[Learn More Today!](#)**

## ADVISORY BOARDS

LFCE is strengthened by the insight, experience, and guidance of several impactful advisory boards who play a vital role in advancing our mission.

### *Organizational Leadership Advisory Board*

Leaders from Education, Healthcare, Law Enforcement, Technology, and the Private Sector guiding the Ed.D. in Organizational Leadership to ensure relevance, impact, and excellence. Members represent the following institutions/sectors:

Barstow Community College  
Business Sector  
Coast College Community  
College District  
Citrus Community College  
College of the Canyons  
College of the Desert  
Crafton Hills College  
CSU Chancellor's Office  
De Anza College  
Fullerton College

IEHP  
LA Community College District  
Los Angeles Harbor College  
Los Angeles Pierce College  
MiraCosta Community College  
Moreno Valley College  
Norco College  
Santa Ana College  
Santa Barbara City College  
Technology Sector  
Umma Health

## Superintendent Advisory Board

Superintendents provide field-informed insight and strategic partnership to advance the college's mission and programs. Members include Superintendents from the following districts:

Bonita Unified School District  
Corona-Norco Unified School District  
Desert Sands Unified School District  
Fruitvale School District  
Glendora Unified School District

Ontario-Montclair School District  
Pomona Unified School District  
Taft School District  
Val Verde Unified School District  
West Covina Unified School District

## Educational Leadership Advisory Board

Educational leaders providing strategic guidance to strengthen and advance the Ed.D. in Educational Leadership program. Members include District Leaders from the following districts/agencies:

Bonita Unified School District  
Chaffey Joint Union School District  
Jurupa Unified School District  
Los Angeles County of Education  
Lynwood School District  
Menifee Unified School District  
Pomona Unified School District  
Riverside County Office of Education  
Taft City School District



**LEARN MORE**

**Community****Conversation****Connection**

## EVENT RECAP

This semester, the Collaborative hosted a series of engaging events that brought students, faculty, and community partners together through interactive workshops and discussions. The Center's programming emphasized collaboration, skill-building, and community connection, creating spaces for idea-sharing and real-world learning.

These events reinforced the Collaborative Center's mission to support experiential learning, strengthen partnerships, and foster a culture of collaboration across campus and beyond.

**Community College Leadership Symposium**

**Transitional Kindergarten (TK) Training**

**Dolly Parton's Imagination Library Community Meeting**

**An Intimate Conversation with Dr. Juana Bordas**

**Left Behind Movie Screening**

**Faculty Teaching & Learning Workshops**

# Community College Leadership Symposium



The Community College Leadership Symposium brought together leaders, innovators, and educators for an impactful day of learning, connection, and renewed purpose. Featuring a Community College President Panel, engaging discussions on innovation, stewardship, wellness, and sustainable leadership, and a keynote message encouraging participants to “find our place, pace, and tribe,” the symposium offered both meaningful insight and practical guidance for the leadership work taking place across community colleges, with strong participant engagement helping shape its lasting impact and future programming.

## Participant Feedback

*“This event was fantastic.”*

*“Thank you so much for a memorable day!”*



## Transitional Kindergarten (TK) Training

### *Workshop for Bonita Unified School District Teachers*

Dr. Cindy Giaimo-Ballard and Professor Liz Tomashefsky lead an engaging Transitional Kindergarten workshop for teachers from Roynon Elementary School and Gladstone Elementary School.

The interactive session explored developmentally appropriate practices, how TK children learn best, ways to incorporate play and nature into classrooms, and strategies for aligning instruction with California's Learning Foundations. It was a great event that brought valuable insights and collaboration for the districts.

Thank you to all the dedicated educators who attended to make learning joyful and meaningful for our youngest students!



## Dolly Parton's Imagination Library Community Meeting

**Community Conversation  
Championing Early Literacy**



Community members came together to discuss bringing Dolly Parton's Imagination Library to the East San Gabriel Valley and the importance of early literacy. Participants shared success stories from nearby regions, and explored ways to collaborate in bringing this transformative program to local families. The conversation was filled with energy, passion, and a shared commitment to helping every child develop a lifelong love of reading. Dolly Parton's Imagination Library creates lasting impact by providing free, high-quality books to children from birth to age five, fostering strong literacy foundations and brighter futures.

A heartfelt thank-you to everyone who attended, contributed ideas, and shared their enthusiasm.



**Together we are  
building a  
community where  
every child has the  
opportunity to  
thrive!**

## An Intimate Conversation with Dr. Juana Bordas

“An Intimate Conversation with Dr. Juana Bordas” was a powerful celebration of culture, leadership, and community. Dr. Bordas, an internationally recognized Latina leader and author, inspired a full audience with her reflections on *The Power of Latino Leadership – ¡Ahora!*, highlighting cultural identity, collective leadership, and community impact.



The event was enriched by vibrant Ballet Folklórico performances from Pomona and Westminster High Schools and culminated in a special book signing of Dr. Bordas’s award-winning book, proudly honored with the International Latino Book Award for Best Leadership Book.

## LEFT BEHIND - Special Movie Screening and Director Q & A



The movie screening of *Left Behind* highlighted the challenges faced by children with dyslexia and the importance of advocacy, equity, and education. Filmmaker Anna Toomey joined virtually for a live Q&A, sharing updates on the families featured in the film and her ongoing work through the *Left Behind* Impact Campaign.

The event also included a panel discussion with ULV faculty and dyslexia experts from West Covina Unified School District and the International Dyslexia Association, creating a meaningful space for dialogue, learning, and community connection.

**“It was such a powerful experience to be in community with educators, parents, and advocates for children with neurodiverse learning needs. Many participants are determined to bring the film to their own communities, driven by the urgent need for schools to equip all educators with the training and tools necessary to identify and support every child’s journey to literacy.”**

– Dr. Marga Madhuri, Program Chair, Dyslexia Teaching Training Program and Board Member, International Dyslexia Association Los Angeles Branch

## Training & Learning Workshops

The Collaborative proudly supports academic innovation and sustained instructional improvement through a dynamic series of teaching and learning workshops. The series emphasizes evidence-based practices and transferable strategies that contribute to programmatic coherence and institutional learning goals. Previous topics included:

- ✦ Leveraging Microsoft Copilot Chat for Advanced Teaching Workflows
- ✦ Using Video and Voice Tools to Deliver Meaningful, Personalized Student Feedback
- ✦ Creating Effective, AI-supported Rubrics
- ✦ Implementing Best Practices in Virtual Learning Environments

**SPRING DATES**

*Coming Soon!*

Interested in Attending?  [Click Here to Let us Know!](#)

Each workshop is held at The Collaborative Center and/or on Zoom and is facilitated by expert educators committed to strengthening teaching and academic excellence.

## Collaborative Conversations



**We're excited to launch our new podcast— a conversation-driven series featuring honest dialogue on education, leadership, equity, and community impact. Recorded live at The Collaborative, each episode brings together local and national leaders shaping the future of learning.**



**[Collaborative Conversations on Spotify](#)**



**[Collaborative Conversations on Apple](#)**



**[Collaborative Conversations on Podbean](#)**



# COLLABORATIVE

EDUCATION.LAVERNE.EDU/COLLABORATIVE



Check out the new  
**Collaborative Website!**

**NEWS**



**PROGRAMS**

**PARTNERSHIPS**



**EVENTS**

**AND** *More*

# SAVE THE DATE

## Community College Leadership Symposium

ADAPT | PIVOT | INNOVATE

MAY 7, 2026

University of La Verne



Follow  
for Updates!

### Meet Our Team



**Dr. Martin Yousef**  
Associate Dean



**Dr. Michael Vallejo**  
Director



**Thomas Costello**  
Professor of Practice for Instructional  
Design and Technology Faculty Lead,  
Center for Learning Innovation



**Bryan Best**  
Senior Instructional Technologist



**Kelly Fragiacom**  
Manager

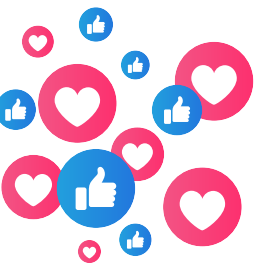


### Contact

[LFCECollaborative@laverne.edu](mailto:LFCECollaborative@laverne.edu)

1574 Arrow Highway, Suite A  
La Verne, CA 91750

**(909) 448-4435**



LET'S STAY  
**CONNECTED**



FOLLOW US ON

**LinkedIn**®



Stay Updated on  
Exciting News,  
Events & Updates!



# CONNECT WITH US!

LFCE Collaborative@laverne.edu

**1574 Arrow  
Highway  
Suite A  
La Verne, CA  
91750**

(909) 448-4435

*See you soon!*

